

Circle of
Excellence
Winner 2009



VIKING MANAGEMENT SYSTEMS LTD

SAGE OPEN DAY

25TH MARCH, SAGE OFFICES - NEWCASTLE



"Join Viking to see the latest developments within Sage and gain a unique opportunity to view Sage's award winning offices"

Product Demonstrations of

[Sage 200 Financials & Commercials](#)

[Sage 200 Project Accounting](#)

[Sage 200 CRM](#)

[Sage 200 Business Intelligence](#)

[Sage 200 Manufacturing](#)

To register, please contact:
Chris Easey, Marketing Manager
Tel: 01759 305030
E-mail: sales@vmsl.co.uk
www.vmsl.co.uk

Viking Management Systems Ltd
Blenheim Road, Pocklington Industrial Estate,
York, YO42 1NR

"I need my business to run as efficiently as it can"

The Sage 200 Suite of business management software helps organisations with a typical turnover of £1m-£20m to coordinate their whole business: from customer-facing systems, through back-office processes, to core activities such as retail/wholesale, construction, manufacturing and engineering.

The software helps staff work together more effectively and limited or expensive resources are optimised. Managers have instant access to company-wide information and are equipped to plan for the future.

Many elements of the suite have evolved over a long period of time; for example, Sage 200 Financials and Sage 200 Commercials are based on Sage MMS, a tried and tested system available for some years

To see how Sage 200 could benefit your business, reserve your place now by calling our Sales Department on 01759 305030 or e-mail sales@vmsl.co.uk

Thinking of upgrading from Sage Line 50?

Viking are proud to be one of Sage's elite "Customer Development Centres" specialising in migrating businesses from Line 50 to Sage 200



Introducing Sage 200 Business Intelligence

Make faster, more informed and confident strategic decisions

Sage 200 Business Intelligence (BI) is an easy to use product that allows quick access to Sage 200 data. Multi dimensional analysis means that data can be easily viewed from different angles. For example sales by region, customer and month.

Reporting and analytics within the familiar environment Microsoft Excel

Sage 200 BI brings business data into the familiar Microsoft Excel environment allowing quick analysis of company data from many different angles. The features of Excel, such as ease of formatting, calculations and macros can all be used to enhance the reports created using Sage 200 BI.

Save essential time on reporting

Sage 200 BI provides a superior alternative to complex spreadsheet reporting. Providing you with one version of the truth and reducing the need for complex time consuming spreadsheets which require manual intervention and manipulation.

Save time with pre-defined reports out of the box

Sage 200 BI is supplied with pre defined reports allowing you to analyse and understand financial and commercial information within your Sage 200 solution. For example - Profit & Loss by cost centre and department, Sales by Customer by Month, Stock Valuation last 3 months, Trend In Overdue orders and Stock Movements by Product Group - and many more.

Easy and fast deployment

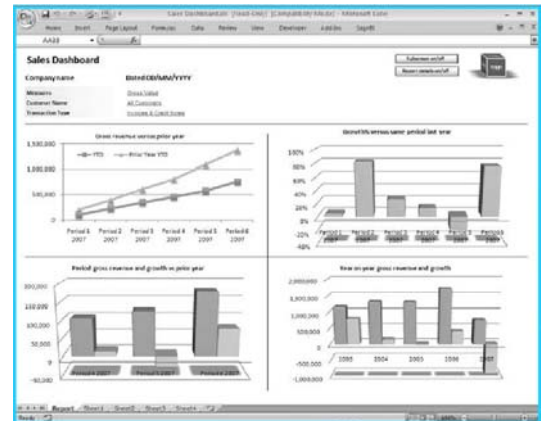
Sage 200 BI is a fast and easy tool to deploy across the business with minimal disruption. In the majority of cases a complete installation of Sage 200 BI takes less than an hour from beginning the installation process to viewing the standard pre-defined reports with data.

Built using market leading Microsoft technology

Sage 200 BI uses reliable Microsoft SQL Server Analysis Services which is a market leading OLAP (On Line Analytical Processing) technology.

Flexible layout options

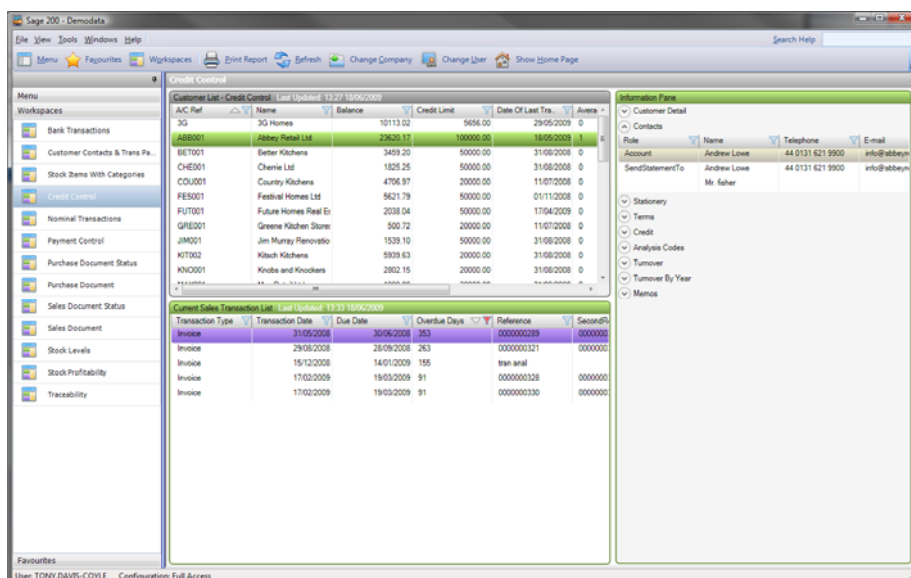
Allowing you to produce formal reports, you have the ability to layout all forms of reports exactly as you would within Microsoft Excel, inserting new rows and columns, and formatting reports using your Excel knowledge. You can also build professional dashboard reports with multiple linked queries and charts:



Sage 200 Workspaces

Workspaces is one of the top new features of the Sage 200 2009 release, delivering an integral part of the information management strategy - making information within the Suite more available to users in their day to day roles.

Workspaces have been designed to give the user business critical information at a glance, their design makes it quicker and easier to access related information. Ten standard 'out of the box' workspaces are available along with a workspace designer tool that allows for configuration or creation of new workspaces.



Workspace designer enables advanced users to configure user defined workspaces, allowing each individual user to have a customised workspace to meet their individual requirements.

To find out how Sage 200 BI & Workspaces can benefit your company, please contact our Sales Department on 01759 305030 or e-mail sales@vmsl.co.uk to discuss your requirements, or to reserve your place for the event